

# BUniPort – Campus Client Notes (rev.1)

## Requirement:

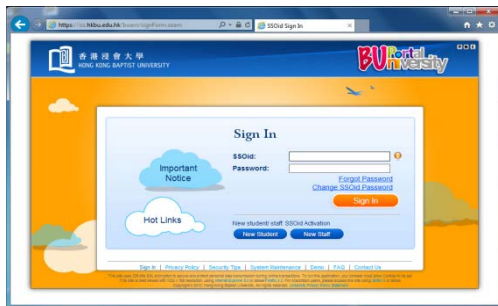
1. PC with Windows XP or 7;
2. Successfully logon on HKBUEAD and shutdown/restart twice in last three weeks;
3. IE (Internet Explorer) at least be ver. 8 with latest update;

## Single-Sign-On

As full-time staff/student logon AD with his/her SSOid, the IE will be launched by the AD script, as well as sign-on the BUniPort automatically.



**If not, but prompt for login,** please try logon manually.



1. **Fail to logon manually**: the user may not have BUniPort privilege. It can be verified with BUAM console. If both “BUniPort” and “GMail” checked, however still fail, please report the case to Hotline.

Service Indicators		
<input checked="" type="checkbox"/> Exchange Mail	<input type="checkbox"/> BU Mail	<input type="checkbox"/> Student Mail
<input checked="" type="checkbox"/> Allow Workstation Logon	<input checked="" type="checkbox"/> BUniPort	<input checked="" type="checkbox"/> Web Hosting Server: <input type="text"/>
<input checked="" type="checkbox"/> File Service	<input checked="" type="checkbox"/> Print Service: <input type="text"/> (quota in no. of papers, 0 = unlimited)	
<input checked="" type="checkbox"/> Wi-Fi	<input type="checkbox"/> Force user to change password at next logon	
<input checked="" type="checkbox"/> UIS	<input checked="" type="checkbox"/> BU Moodle	<input type="checkbox"/> SCE Moodle
		<input type="checkbox"/> ISS Apps

2. **Success to logon manually**: the workstation’s browser setting need to be retouched as follow:

## IE configuration for BUniPort

(Refer to **Appendix I “Configuration for enabling SPNEGO support in IE”**)

1. For most workstations, the setting should already be implanted during logon AD.
2. Chrome is based on IE configuration. Configuration of IE apply to both IE and Chrome.

## Firefox Setting configuration for BUniPort

(Refer to **Appendix II “Configuration for enabling SPNEGO support in FireFox”**)

\*\*\* Firefox must be setup manually.

## Registry to enable IE Single-Sign-On

For “Reborn” workstation, the following registry key need to be applied manually, and reboot twice in unprotect mode.

### *HLMC.reg*

```
Windows Registry Editor Version 5.00
[HKEY_LOCAL_MACHINE\SYSTEM\CurrentControlSet\Control\Lsa]
"SuppressExtendedProtection"=dword:00000002
```

### *PORTAL\_CURRENT\_USER.REG*

```
Windows Registry Editor Version 5.00

[HKEY_CURRENT_USER\Software\Microsoft\Windows\CurrentVersion\Internet
Settings\ZoneMap\Domains\hkbu.edu.hk]
"*"=dword:00000001

[HKEY_CURRENT_USER\Software\Microsoft\Windows\CurrentVersion\Internet
Settings]
"EnableNegotiate"=dword:00000001

[HKEY_CURRENT_USER\Software\Microsoft\Windows\CurrentVersion\Internet
Settings\ZoneMap]
"AutoDetect"=dword:00000001

[HKEY_CURRENT_USER\Software\Microsoft\Windows\CurrentVersion\Internet
Settings\Zones\1]
"1A00"=dword:00020000

[HKEY_CURRENT_USER\Software\Microsoft\Internet Explorer\BrowserEmulation]
"IntranetCompatibilityMode"=dword:00000000
```

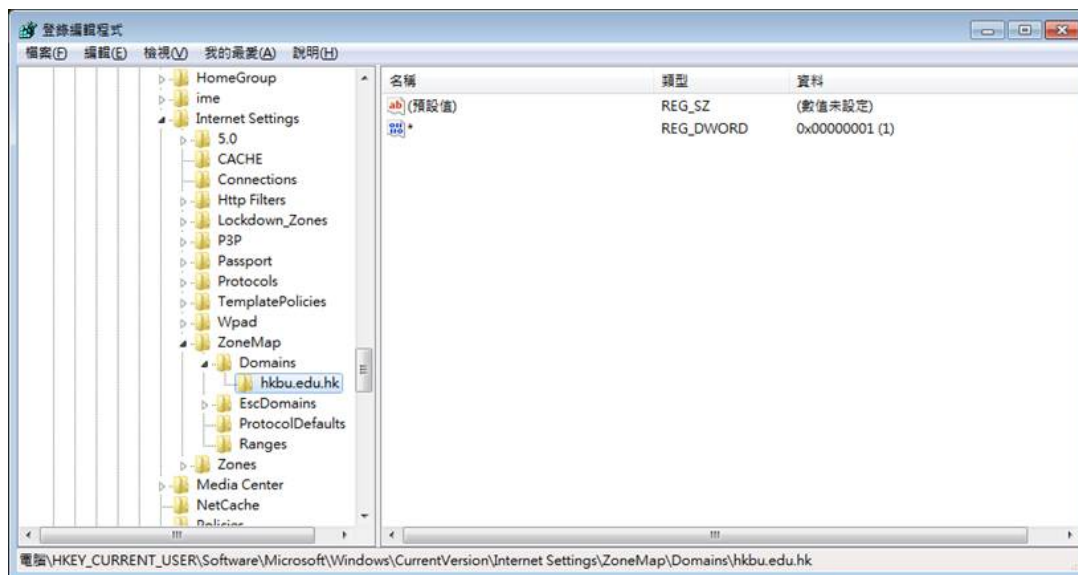
## Registry Residual left during PC upgrade

Finding and solution by Clovis during fixing Kenneth’s workstation (2013/5/23).

“After Clovis’ checking, he found one special part in Kenneth’s computer registry. He found some extra registry keys in this location:

HKEY\_CURRENT\_USER\Software\Microsoft\Windows\CurrentVersion\Internet Settings\ZoneMap\Domains\hkbu.edu.hk

Clovis deleted the folder “hkbu.edu.hk” in regedit and rerun the login script again(restart computer), then Kenneth’s computer can do SPNEGO successfully in IE.



Clovis said that it may be caused by migration. Some old local intranet setting of IE was migrated to a new computer and make this problem:



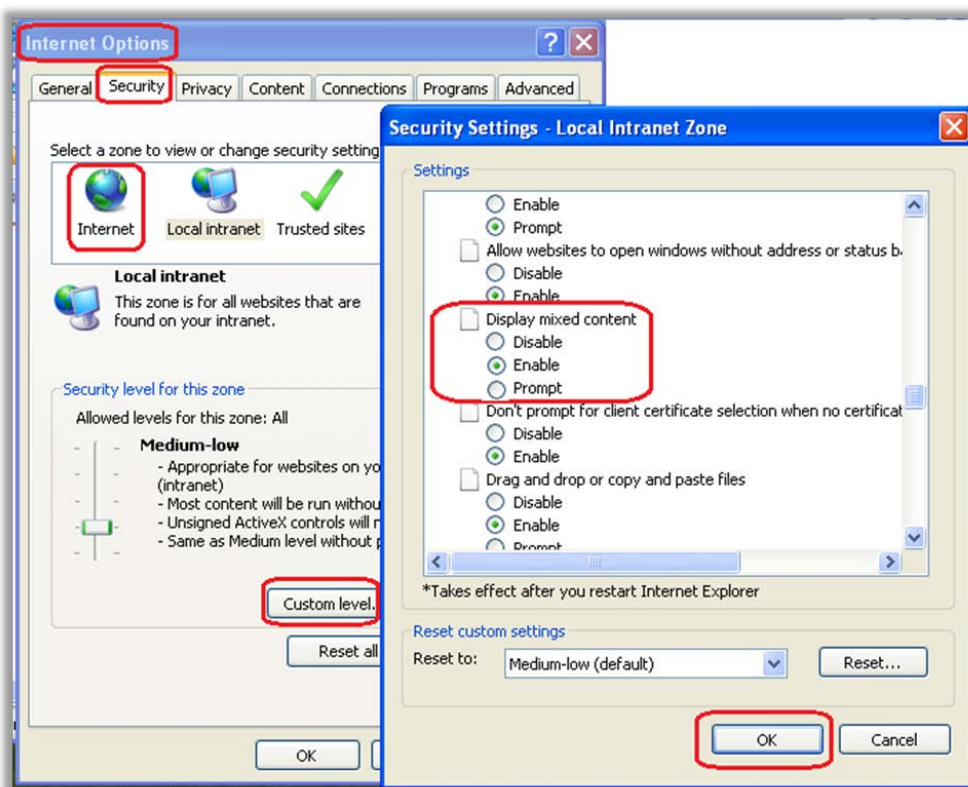
But Clovis also said this solution may only apply to this case, it cannot represent that all the fail case are caused by this reason. We will have a look on TOM’s computer.”

## Security Warning: “Do you want to view only the webpage content that was delivered securely?”



Usually found under Windows XP with IE 8.0.60001.18702. The fix:

1. At IE, go to Tools->Internet Options->Security
2. Select the Security tab
3. Click on the Internet zone icon at the top of the tab page
4. Click the Custom Level button
5. In the Miscellaneous section change Display mixed content to Enable
6. Repeat steps 1 – 5 for the Local intranet and Trusted sites zones



## Appendix I

### 1. Configuration for enabling SPNEGO support in IE

Source: <http://msdn.microsoft.com/en-us/library/ms995329.aspx>

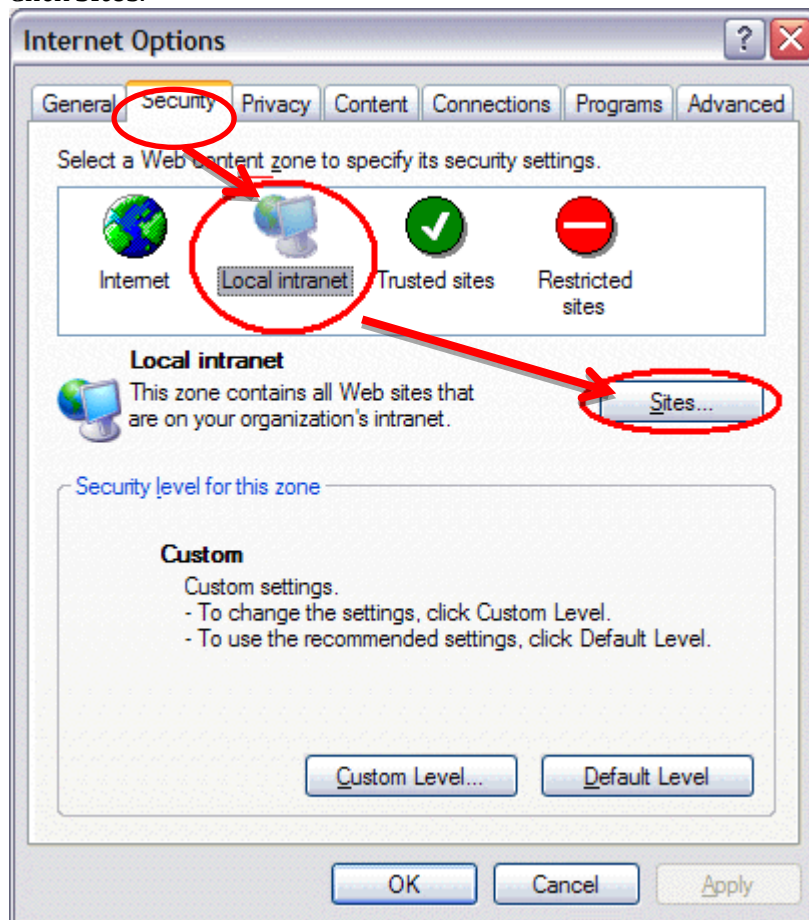
#### 1.1. Update to later version of IE

For client using IE version 6 or before, please update the IE to a later version (preferably the latest version for enhanced security, functionality and support) through **Windows Update** or download from the site <http://windows.microsoft.com/en-US/internet-explorer/downloads/ie>.

#### 1.2. Configure local intranet sites

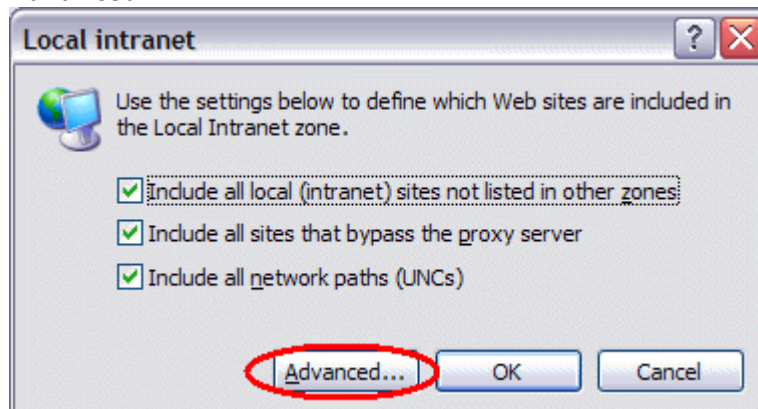
Because this solution assumes an intranet environment—defined as not exposed to the public Internet—we will next configure Internet Explorer to work with the SSO solution. First, configure the "Local intranet" properties in Internet Explorer.

1. In Internet Explorer, click **Tools**, and then click **Internet Options**.
2. Click the **Security** tab.
3. Click **Local intranet**.
4. Click **Sites**.



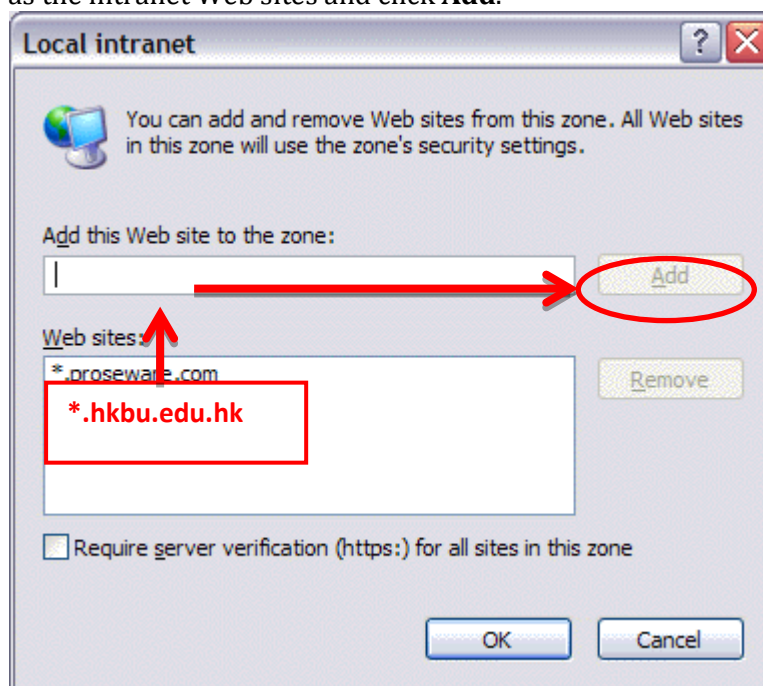
Internet Explorer Internet Options dialog box—Security tab

5. Ensure that **Include all sites that bypass the proxy server** is checked, then click **Advanced**.



Local intranet dialog box

6. In the **Local intranet (Advanced)** dialog box, enter the domain name “\*.hkbu.edu.hk” as the intranet Web sites and click **Add**.

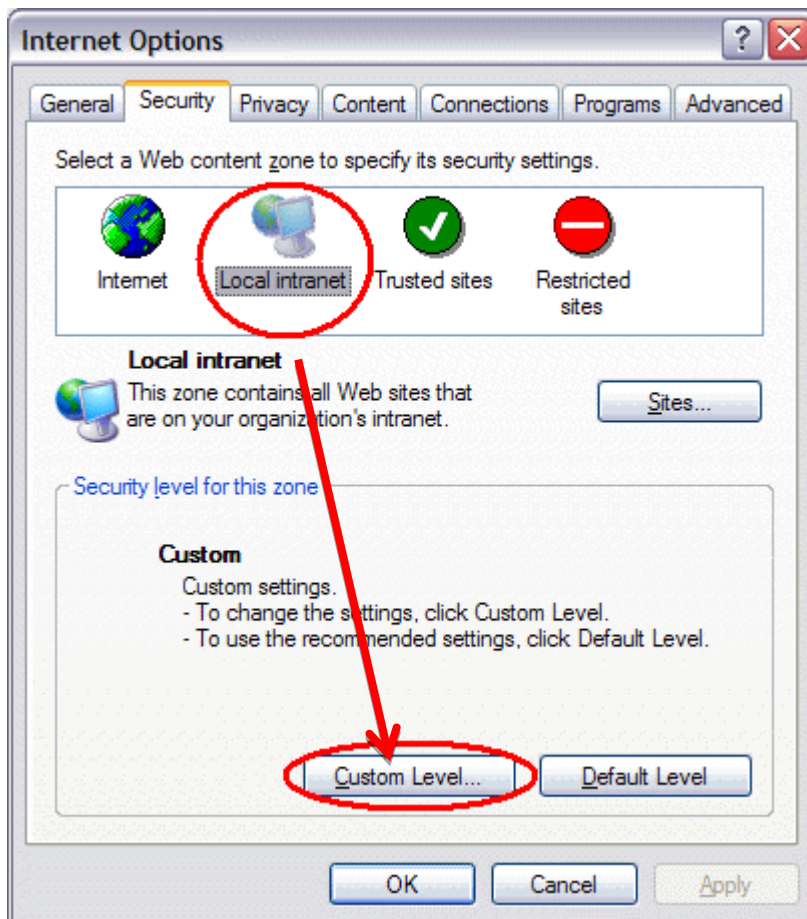


Local intranet dialog box (Advanced)

7. Click **OK** to close the dialog boxes.

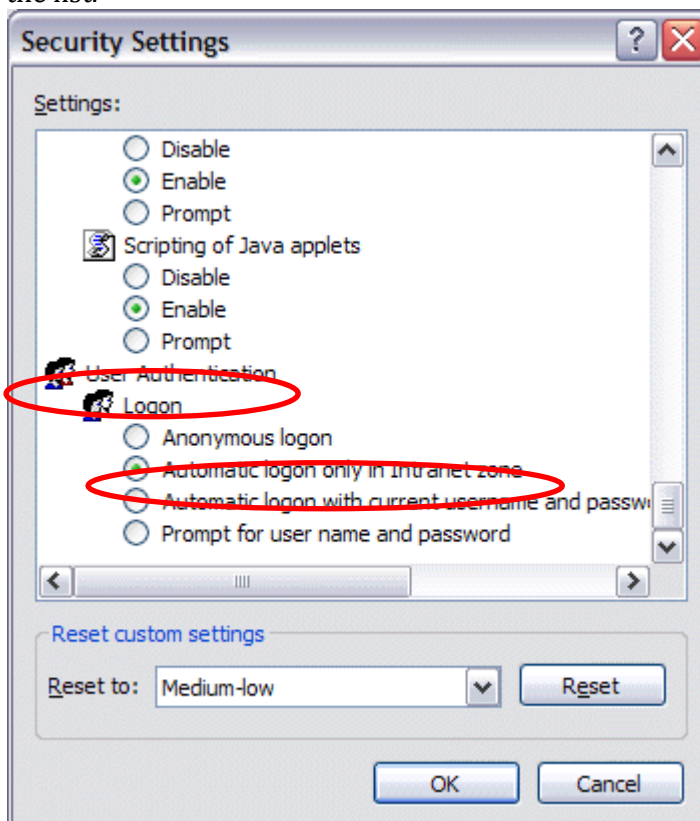
### 1.3. Configure intranet authentication

1. Next, click the **Security** tab, click **Local intranet**, and then Click **Custom Level**.



**Internet Options dialog box—Security tab**

2. In the **Security Settings** dialog box, scroll down to the **User Authentication** section of the list.

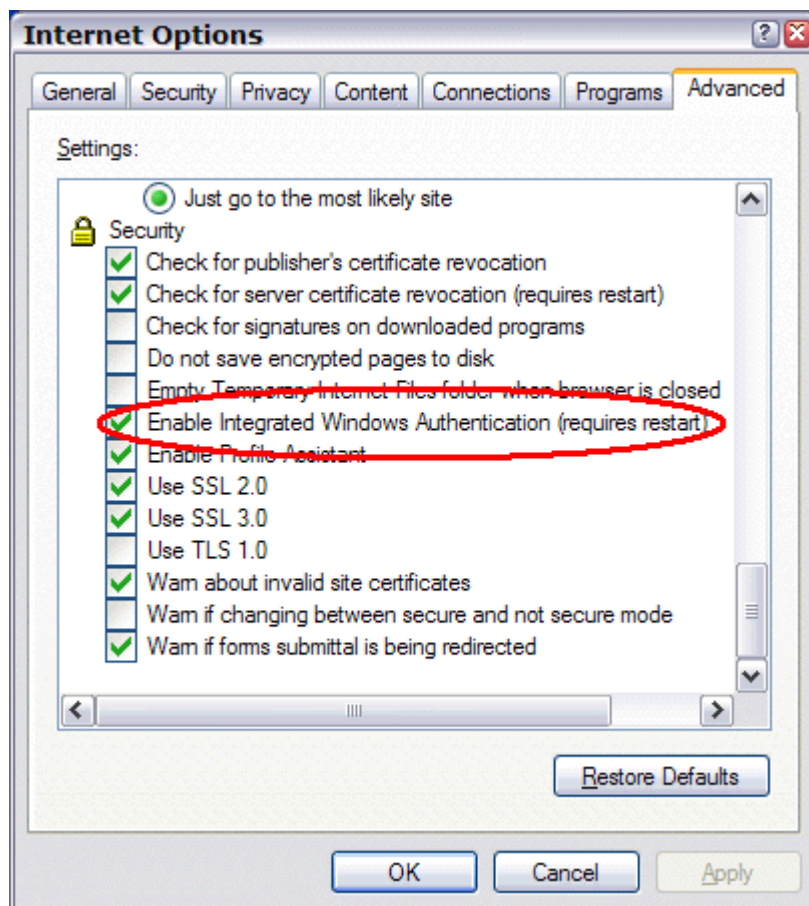


**Internet Explorer Security Settings dialog box**

3. Select **Automatic logon only in Intranet zone**. This setting will prevent users from having to re-enter logon credentials; a key piece of the solution.
4. Click **OK** to close the **Security Settings** dialog box.

In addition to the settings made above, one additional setting needs to be ensured.

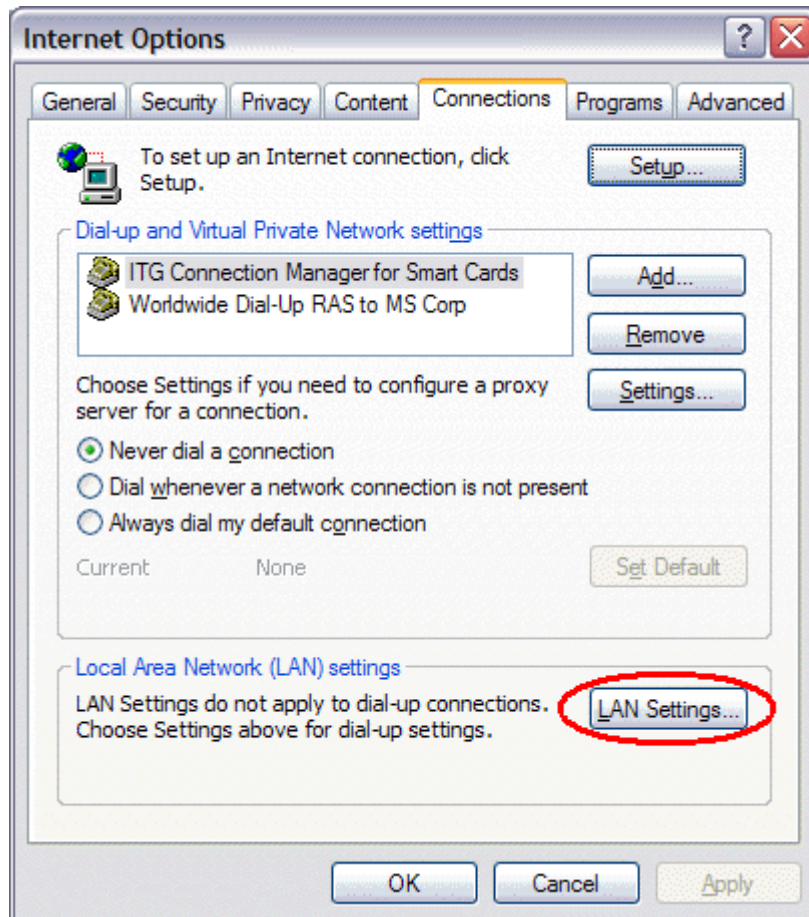
1. In Internet Explorer, click **Tools**, and then click **Internet Options**.
  2. Click the **Advanced** tab.
  3. Scroll down to the Security section.
  4. Make sure that **Enable Integrated Windows Authentication (requires restart)** is checked, and then click **OK**.
- If this box was not checked, check it and restart the computer.



**Internet Explorer Advanced Security Settings dialog box**

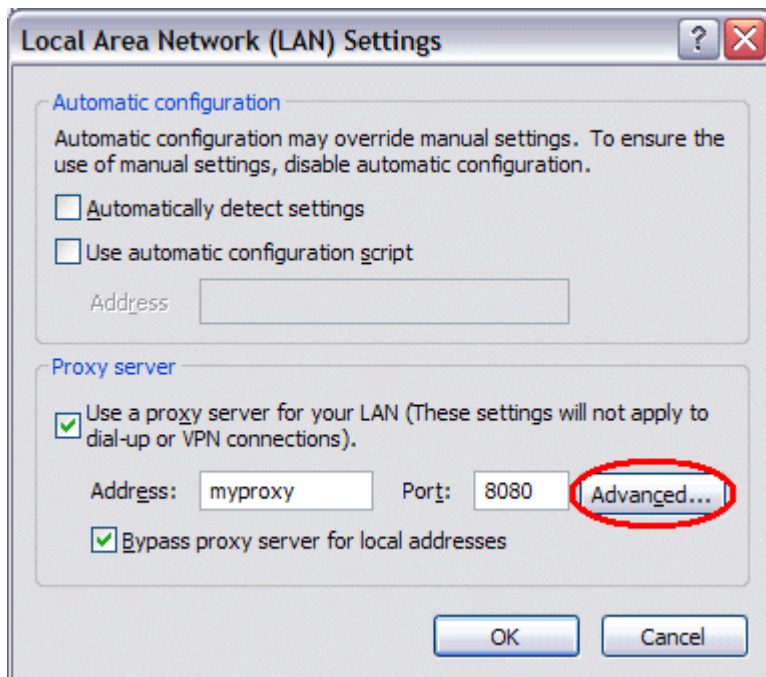
#### 1.4. Excluding access campus services through proxy (Optional, only for machine using proxy)

1. In Internet Explorer, click **Tools**, and then click **Internet Options**.
2. Click the **Connections** tab.



Internet Explorer Internet Options dialog box—Connections tab

3. Click **LAN Settings**.



#### Internet Explorer LAN Settings dialog box

4. Verify that the proxy server address and port number are correct.
5. Click **Advanced**.
6. In the **Proxy Settings** dialog box, ensure that **\*.hkbu.edu.hk** and all other desired domain names are entered in the **Exceptions** field:

#### Internet Explorer Proxy Settings dialog box

7. Click **OK** to close the **Proxy Settings** dialog box.

### 1.5. Testing the configuration

Please see **Section 4**

## Appendix II

### 2. Configuration for enabling SPNEGO support in FireFox

Source:

[http://publib.boulder.ibm.com/infocenter/wasinfo/v6r1/index.jsp?topic=%2Fcom.ibm.websphere.base.doc%2Finfo%2Faes%2Fae%2Ftsec\\_SPNEGO\\_config\\_web.html](http://publib.boulder.ibm.com/infocenter/wasinfo/v6r1/index.jsp?topic=%2Fcom.ibm.websphere.base.doc%2Finfo%2Faes%2Fae%2Ftsec_SPNEGO_config_web.html)

#### 2.1. Configuration

The following steps to ensure that the Firefox browser is enabled to perform SPNEGO authentication.

1. At the desktop, log in to the windows active directory domain.
2. Activate Firefox.
3. At the address field, type **about:config**.
4. In the Filter, type **network.n**
5. Double click on **network.negotiate-auth.trusted-uris**. This preference lists the sites that are permitted to engage in SPNEGO Authentication with the browser. Enter a comma-delimited list of trusted domains or URLs (i.e.: hkbu.edu.hk).
6. Click **OK**. The configuration appears as updated.
7. Restart your Firefox browser to activate this configuration.

#### 2.2. Testing the configuration

Please see **Section 4**

### 3. Configuration for enabling SPNEGO support in Chrome

The SPNEGO support of Chrome depends on Internet Explorer, i.e. once SPNEGO support is enabled in Internet Explorer, Chrome would also have SPNEGO support.

#### 3.1. Testing the configuration

Please see **Section 4**

### 4. Testing the configuration

Open URL [https://iss.hkbu.edu.hk/buam/SPNEGO\\_Check](https://iss.hkbu.edu.hk/buam/SPNEGO_Check) in the browser to be tested

- a. If the configuration is successful, it will display a welcome message to the user (with user name)
- b. If the configuration is failed, it will redirect the user to a Sign-in page.

### 5. Update UIS for the migration status

Login to UIS, go to [Work → BUniPort Admin → Novell to AD Migration Utility], update the "Action Status" from AD1 → AD2.

--

2013/07/03